

Hose Trolley 4IR1000

Hose Trolley Parts and Maintenance

Maintenance:

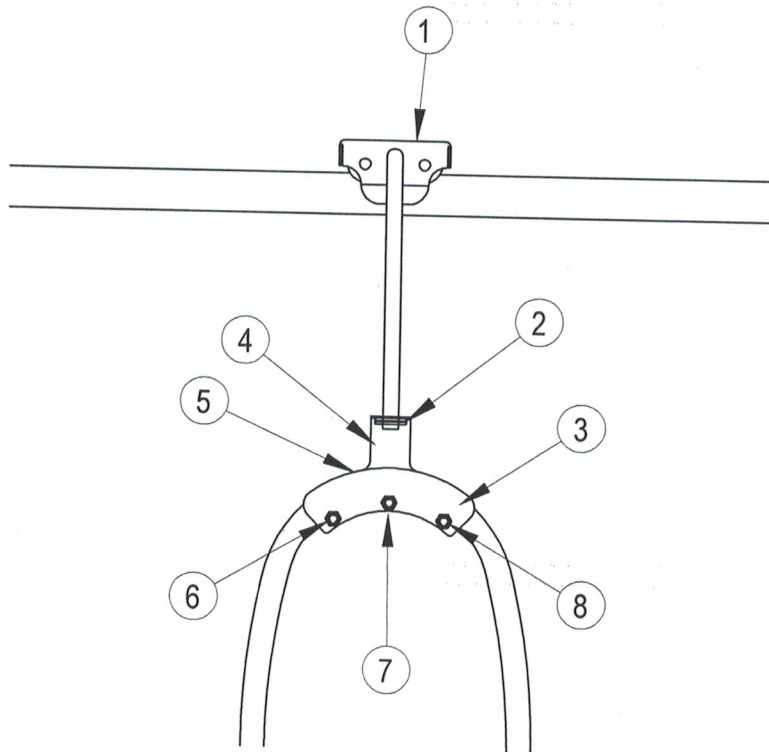
A. Cleaning:

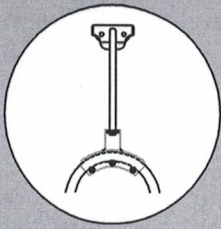
1. Clean off any build up on overhead rail and around roll pin that could limit movement.

B. Lubrication:

1. Oil trolley head rollers at least twice yearly with a light machine oil. bearings are concealed by trolley head casing but oil will penetrate. Turn trolley head upside down, apply oil and spin rollers.

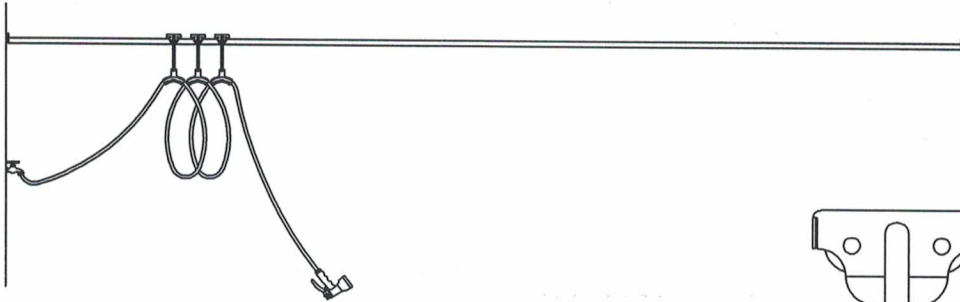
HOSE TROLLEY PARTS TABLE			
ITEM	DESCRIPTION	PART NUMBER	QTY
1	TROLLEY WITH PENDANT	2MS0325	1
2	$\frac{3}{16}$ X 1 ROLL PIN	2FMF1800	1
3	SADDLE FRONT PLATE	2IR0012	1
4	HOSE SADDLE	2IR0010	1
5	$\frac{3}{16}$ X 12 BLACK CABLE TIE	2EP0270	1
6	$\frac{1}{4}$ X 1 $\frac{1}{2}$ HEX BOLT	2FBH0050	3
7	$\frac{1}{4}$ X $\frac{1}{2}$ X 1 ALUMINUM SPACER	2IR0020	3
8	$\frac{1}{4}$ HEX LOCK NUT	2FNH0140	3





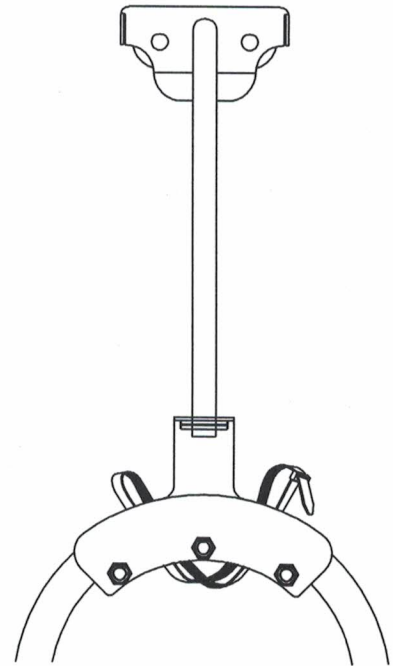
Hose Trolley 4RR1000

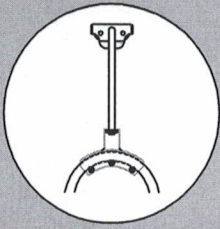
Hose Trolley Installation



Installation:

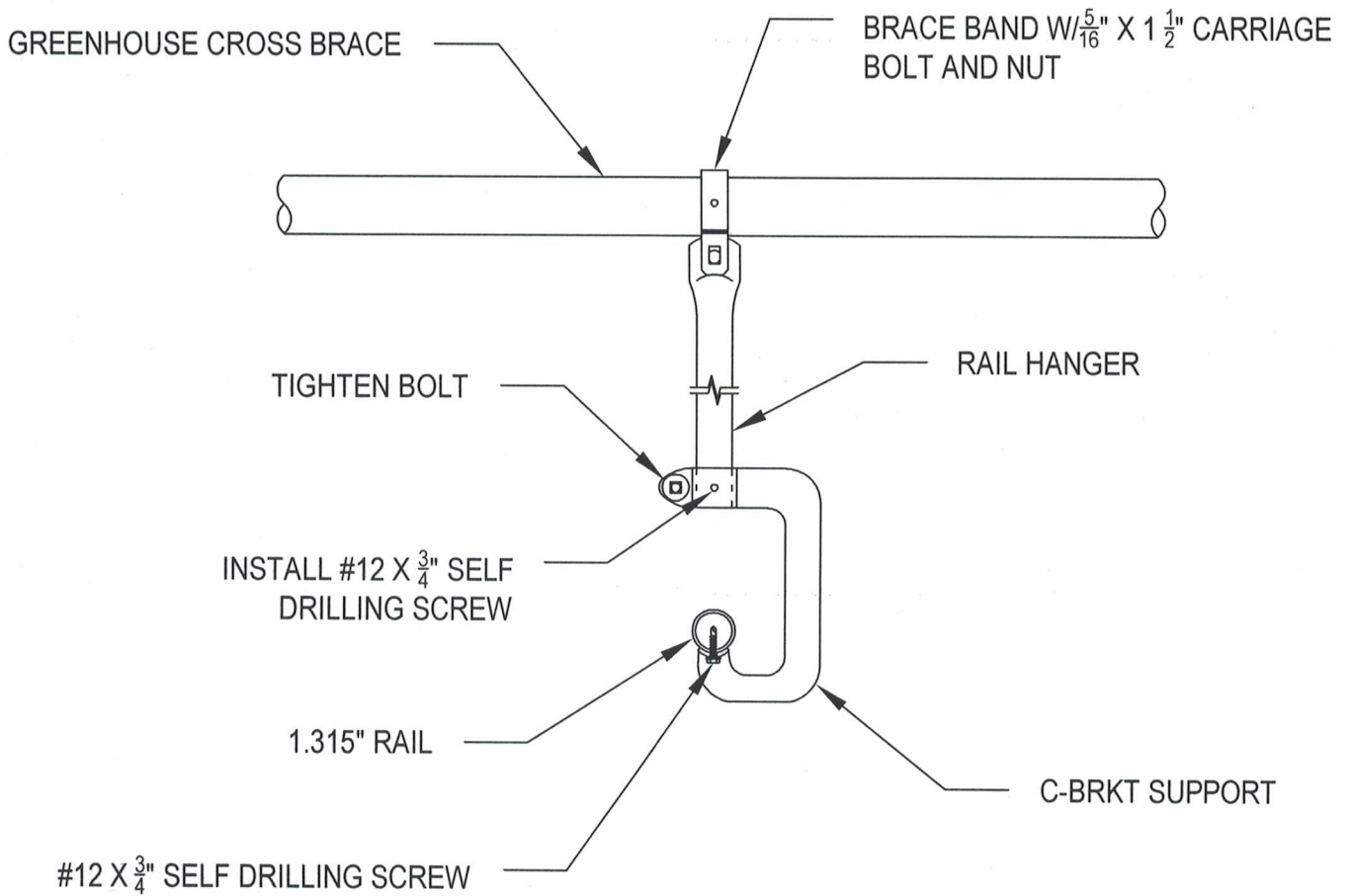
1. hang hose trolley assemblies on overhead rail.
2. Attach hose to water source, spigot, etc....
3. Loop hose over hose saddles with the same size loop between each saddle. The hose loops must clear any plants or equipment in the path of the hose.
4. Secure hose to each saddle with the $\frac{3}{16}$ " x 12" black ties provided. Wrap tie as shown in detail. Secure tightly so hose cannot shift and trim off excess length of material.

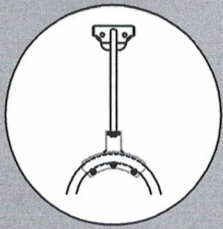




Hose Trolley 4RR1000

Rail Installation





Hose Trolley 4RR1000

Rail Installation Continued

